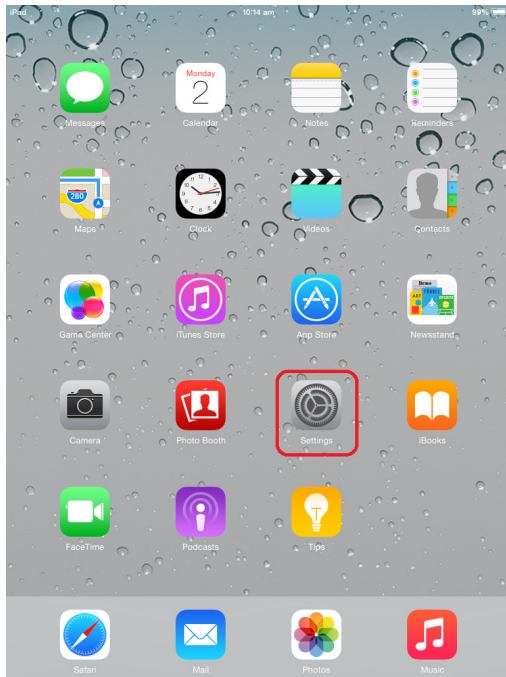
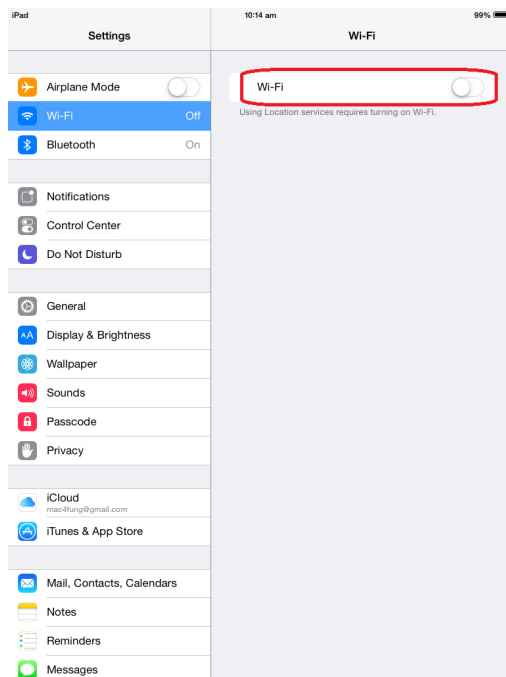


Procedure to configure Apple iPad to support Universities via CSL

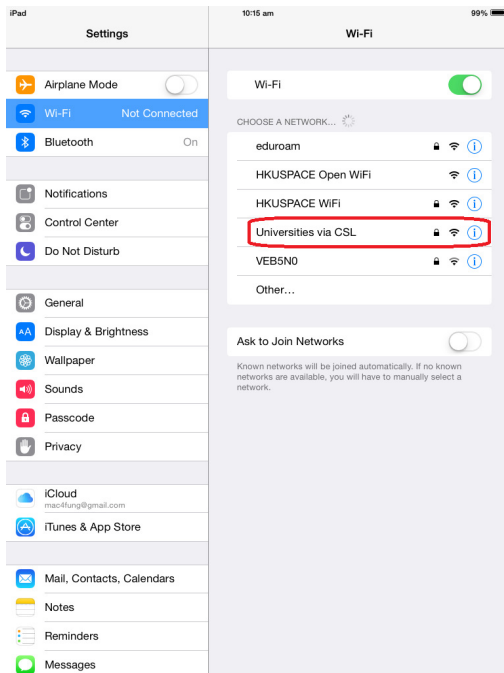
- 1 Turn on your iPad and navigate to the home screen. Locate and Tap the **Settings** icon.



- 2 Tap the **Wi-Fi** button.



3 While you are at CSL Hotspot, ensure that WiFi is turned **ON** and tap "**Universities via CSL**".



4 Enter your username and password.

a. For Student

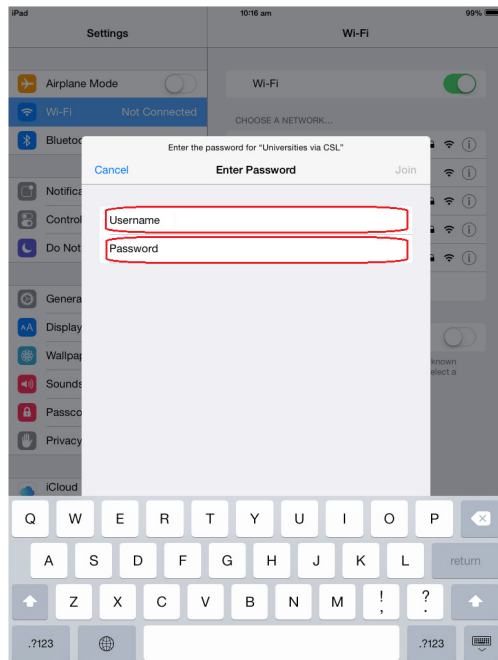
Username: **Student_LoginID@hkuspace.hku.hk**

Password: **Learner Portal Password**

b. For Staff

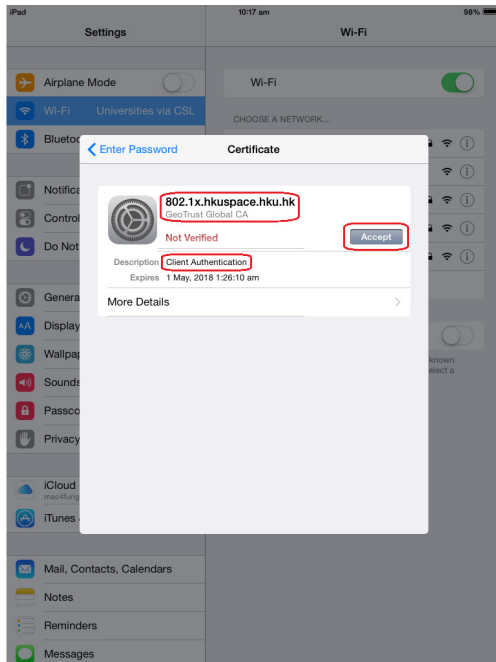
Username: **Staff_LoginID@hkuspace.hku.hk**

Password: **Staff Intranet Password**

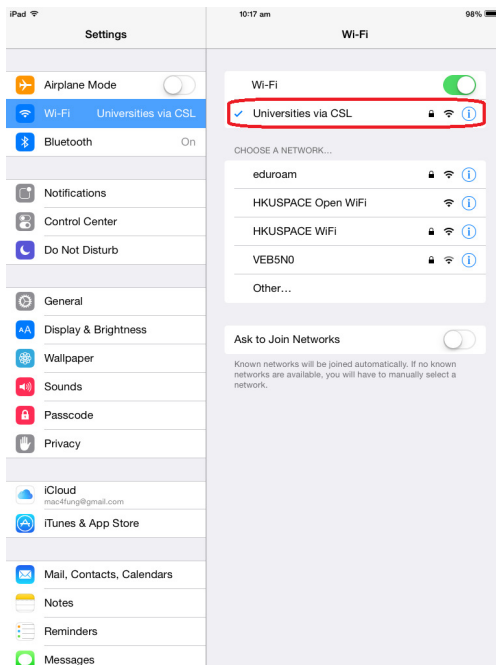


5 Tap **Join**

6 You will be asked to accept the certificate, **802.1x.hkospace.hku.hk**, signed by **GeoTrust Global CA** the first time you connect. Click **Accept** to accept the **Client Authentication**.



7 You should now see "**Universities via CSL**" as your selected network.



8 Open the Internet browser, go to <http://www.google.com>.