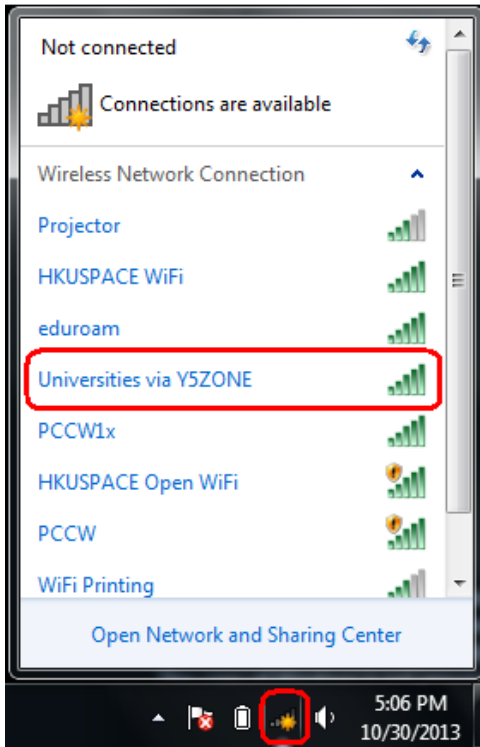
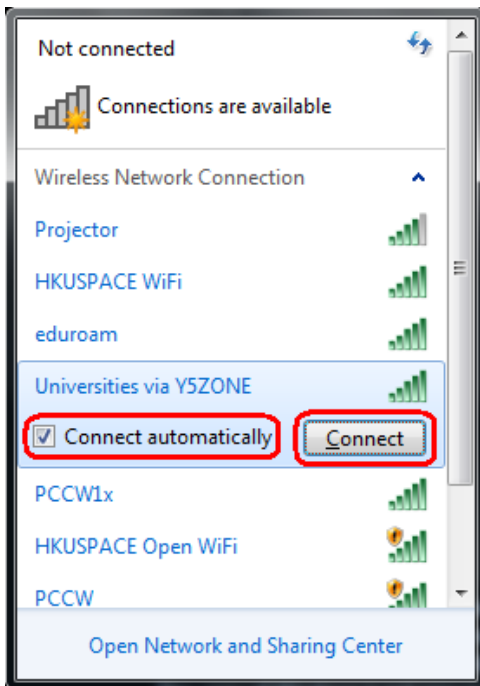


Procedure to configure Windows 7 to support Universities via Y5ZONE

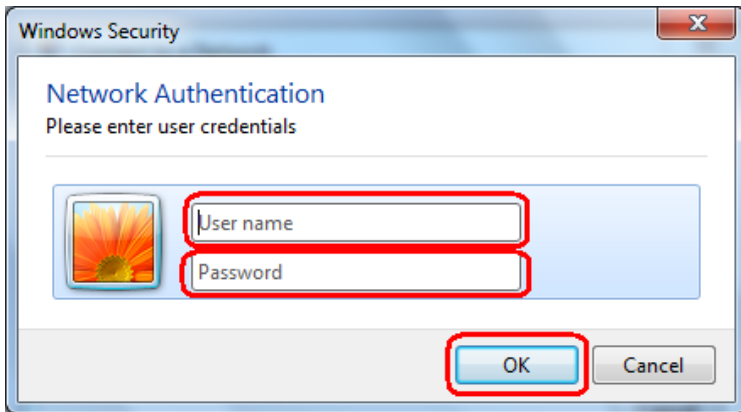
- 1 Click **Wireless Network** icon in the system tray (located at bottom right corner). Select **Universities via Y5ZONE**.



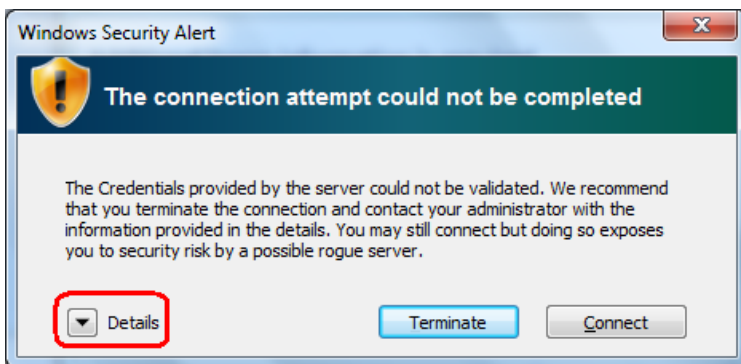
- 2 Check **Connect automatically** and Click **Connect**.



- 3 In the Enter Credentials window, enter your username and password. Click **OK**.
 - a. For Student
Username: **Student_LoginID@hkuspace.hku.hk**
Password: **Learner Portal Password**
 - b. For Staff
Username: **Staff_LoginID@hkuspace.hku.hk**
Password: **Staff Intranet Password**



- 4 When Windows Security Alert pops up, Click **Details**.



- 5 Make sure Radius Server is **802.1x.hkuspace.hku.hk** and Root CA is **GeoTrust Global CA**. Click **Connect**.
- 6 Open the Internet browser, go to <http://www.google.com>.