



UNIVERSITY
OF LONDON

2023



Undergraduate programmes in
Psychology

With academic
direction from:

KING'S
College
LONDON

london.ac.uk/psychology

World class. Worldwide.

Join the World Class

1 Quality of learning

The academic rigour and relevance of this programme is enhanced with expertise from the world-leading Institute of Psychiatry, Psychology & Neuroscience, which is ranked 2nd in the world for psychiatry and psychology.

2 Stimulating content

You'll have access to a range of stimulating content and problem-solving techniques that can be applied to real-life situations across areas such as healthcare, social care, education and law.

3 Employability and career progression

Studying psychology opens up opportunities to develop your career across a variety of sectors such as education, healthcare, social care, criminal and legal services.

4 Developed by experts in the field of psychology

Academic direction is provided by King's College London, a prestigious institution known for its commitment to delivering research excellence. The Department of Psychology at King's offers a contemporary and pioneering approach to the discipline.

5 A mark of excellence

Earn an internationally recognised qualification from the University of London. The University of London has a track record of teaching, innovation and research dating back 160 years.

Contents

Undergraduate programmes in Psychology

Join the World Class	2
A holistic approach to studying the human mind	4
A University of London degree from anywhere in the world	5
Why study psychology?	6
How you study	8
Entrance requirements and further information	10

Key dates

Applications open:

19 December 2022

Applications close:

13 March 2023

Registration closes:

27 March 2023

Programme starts:

17 April 2023

A holistic approach to studying the human mind



Professor Jenny Yiend

**Professor in Cognitive Psychopathology,
King's College London**

We are excited to be offering this innovative online Psychology degree which will allow students from all around the globe to access the

outstanding academic expertise that the Institute of Psychiatry, Psychology & Neuroscience is renowned for. Study of the mind and human brain is one of the most exciting and important areas of today's science. You will obtain wide-ranging knowledge of human behaviour and how the mind works as well as learning to apply psychological science to a variety of contemporary social challenges. Studying with us means you will develop your analytical, critical-thinking and problem-solving skills along with your core scientific knowledge. We look forward to welcoming you onto our programme and sharing with you our own excitement about the fascinating topics that psychology covers.



A prestigious leader in psychology and research education

Academic direction for this programme is provided by King's College London, with enriched content developed by the Institute of Psychiatry, Psychology & Neuroscience (IoPPN). King's College London is globally known for its commitment to delivering research excellence and is ranked 24th in the world in the Times Higher Education Impact Rankings.

IoPPN is a world leader in the research, study and practice of psychiatry, psychology and related disciplines. Dating back to 1896, IoPPN has been a pioneer in facilitating education and training in psychology and psychiatry.

IoPPN is at the forefront of mental health care, redefining mental illness, its treatment and its place in society.

A University of London degree from anywhere in the world



A trusted name in global education

The University of London is one of the world's leading universities, internationally recognised for its high academic standards. This reputation is based on the outstanding teaching and research of our 17 member institutions.

In 1858, we made our degrees available to study anywhere in the world. Today, we have more than 48,000 students in over 190 countries, studying on 100-plus degrees, diplomas and certificates.

A University of London degree

Undergraduate degrees of the University of London are awarded with Honours. The award certificate will indicate the level of the academic performance (Honours) achieved by classifying the award. The classification of the degree will be based on the ratified marks from the completed assessments. The standard classification system for bachelor's degrees with Honours is:

- First Class
- Upper Second Class
- Lower Second Class
- Third Class

A Pass Degree or Ordinary Degree is a degree without Honours. Specific rules for the classification of awards are given in the Programme Regulations, under Scheme of Award.

The FHEQ framework

The UK Quality Assurance Agency for Higher Education has prepared a framework for classifying the level of courses to permit the comparability of those taught in different institutions. University undergraduate courses are classified at three levels corresponding to standard three-year undergraduate degrees: Level 4 (introductory), Level 5 (intermediate) and Level 6 (advanced). (Levels 1–3 describe pre-University courses and Level 7 is graduate level for master's degrees.)

Why study psychology?

The BSc Psychology programme is a contemporary approach to the discipline, with a focus on creativity, independence and applied learning.

A pioneering degree

This programme will provide you with a thorough understanding of psychology as a science, covering the core areas of psychology and their application.

There is an emphasis on research and its application as well as on the use and acquisition of psychological knowledge through exposure to real-world issues.

As a graduate of this programme, you will be able to:

- demonstrate a sound understanding of all the main areas of psychology
- demonstrate the ability to exercise critical judgement in the evaluation of research in the field
- apply a critical understanding of essential concepts, principles and research in psychology, and critically evaluate the results, in the context of loosely defined scenarios, using structured arguments based in empirical evidence.

- demonstrate the ability to produce a substantial piece of original or empirical research work including, for example, study design, data collection, analysis and reporting.

Where can it lead?

Studying psychology opens up opportunities to develop your career across a range of sectors such as education, healthcare, social care, criminal and legal services.

Your degree could lead to a career in areas such as forensic psychology, health psychology, youth services, counselling or human resource management.

Local recognition

In some countries, qualifications earned by distance and flexible learning may not be recognised by certain authorities or regulators for the purposes of public sector employment or further study. We advise you to explore the local recognition status before you register, even if you plan to receive support from a Recognised Teaching Centre.

For more details on Recognised Teaching Centres, visit:
bit.ly/recognised-centres

“IoPPN at King’s College London is the largest academic community in Europe devoted to the study and prevention of mental health problems. It is a leading provider of education at all levels, building upon its unrivalled reputation in mental health and related sciences. With content developed by renowned academics at IoPPN and beyond, the online BSc in Psychology blends world class teaching with internationally leading, society-changing research.”

Dr Juliet Foster
Dean of Education at IoPPN



Gwyneth Rolph

Module leader

"Whether you are a potential career changer, would like to challenge and improve yourself by getting a degree, or whether you have simply always had a fascination for human behaviour, you should consider studying our BSc Psychology. This programme provides an all-round understanding of all the major areas of Psychology, the ability to critically evaluate its major precepts, theories, and empirical research, and learn the skills to undertake a supervised Psychology project, setting the student up well for higher or more specialised training if they should so wish. The degree programme has many transferable skills relevant to many types of careers, and just being able to say that you are a University of London graduate has the potential to open all sorts of doors."

How you study

The programme offers a variety of highly engaging learning materials and activities.

Your learning experience will be enhanced with an accessible and attractive learning platform, opportunities for self-assessment, so you can understand your own progress, and enhanced online student support.

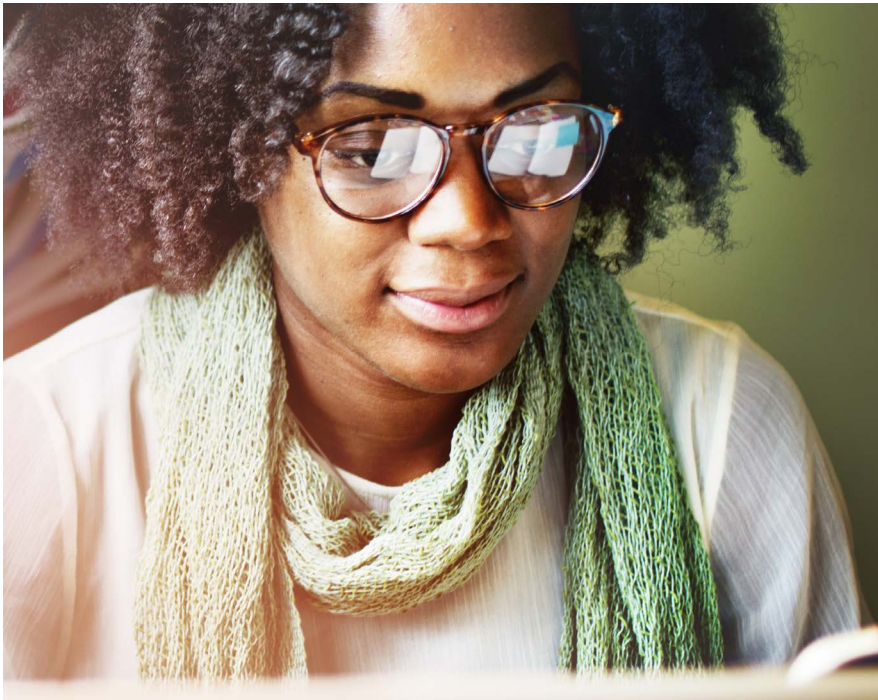
Programme structure

The BSc Psychology consists of:

- eight 15-credit compulsory modules at FHEQ Level 4
- eight 15-credit compulsory modules at FHEQ Level 5
- six 15-credit compulsory modules at FHEQ Level 6
- one 30-credit research project.*

*Please note, the research project relates to 45 credits overall split into two elements: one 15-credit research project preparation module and one 30-credit research project.

As you progress through your BSc studies, you may apply for an intermediate qualification or qualifications (Certificate of Higher Education and/or Diploma of Higher Education in Psychology).



Charlotte Forrest

Module leader

"The programme takes course material from one of the top Psychology Departments in the world, based at King's College London, and applies well-evidenced online learning techniques to create the perfect mix for high level-learning. This, combined with our highly diverse student body and the flexibility offered by online learning, leads to some fascinating discussions on a wide range of psychological topics, from global mental health to forensic psychology to neuroscience."

Study modules

Programme modules cover a range of areas including healthcare, social care, education and law.

For further information on intermediate qualifications and available modules, please visit: london.ac.uk/psychology

Online support

The programme is delivered online and there is no requirement to come to the UK as part of your studies. Our flexible online programme allows you to work around your own schedule and leads to a globally recognised qualification.

When you register, we will give you access to the Student Portal. You can then access your University of London email account and other key resources, including the following:

- The Student Guide which provides information which is common to all students and gives useful information about your relationship with the University of London through to graduation.
- The Virtual Learning Environment (VLE) which offers online learning support, access to the student café and discussion areas and other study materials.

- The University of London's Online Library which provides access to over 100 million academic electronic items comprising ebooks, e-journals, conference proceedings, etc. In addition, students can request items which are not held in the Library via the Inter Library Loans service with the British Library. All registered students have free access to the Online Library via: onlinelibrary.london.ac.uk

- Senate House Library provides free reference access for all registered distance and flexible learning students.

Study materials

All essential resources, activities, videos, discussions and support are provided through the VLE. This allows you to fit your studies around your work commitments. There is no need to purchase additional textbooks.

Flexible study

The flexible approach to learning allows students to complete the BSc Psychology in a minimum of three years (subject to module availability) to a maximum of six years.

You can study at your own pace, either part-time or full-time, adjusting the intensity of learning to suit your needs.

You do not have to enter for examinations every year if you have not had enough time to allocate to your studies. As a guide, you should dedicate at least 35 hours per week for approximately 34 weeks of the year if you intend to complete the maximum of four new 15-credit modules, or two new 15-credit modules and the 30-credit research project each session.

Assessment

The format and mode of assessment for this programme may change due to events or circumstances beyond our control. Students will be informed of their assessment arrangements via the VLE, once confirmed. For the latest information on examinations, please visit: london.ac.uk/exams

Entrance requirements and further information

Entry criteria

You should normally have at least:

- three UK GCE A-levels at grade DDE or an acceptable equivalent
- one of these A-levels must be obtained in maths, psychology or biology at grade A–D
- a UK GCSE maths grade A–C/9–4 or equivalent and
- be age 17+ by the registration deadline of your enrolment session.

We accept qualifications from all around the world; for details of these visit: [bit.ly/psychology-entry-reqs](https://london.ac.uk/psychology-entry-reqs)

Performance-based entry

If you do not meet the minimum entry requirements, you may still be eligible to apply through the performance-based route. For further information visit: [bit.ly/psychology-entry-reqs](https://london.ac.uk/psychology-entry-reqs)

What if I do not meet the above criteria?

Even if you do not meet the standard requirements, we will consider each application on its own merits. Our Admissions Panel will consider whether any alternative/

incomplete qualifications or work experience you have are suitable for entry to the programme.

English language requirements

You must satisfy the English language requirements for the programme. Currently this is an:

- IELTS: overall score of at least 6.5 with a minimum of 6.0 in each subcategory or equivalent. This must have been obtained within the past three years.

For more information on the requirements please visit: london.ac.uk/psychology

If you do not meet the English language proficiency requirements but believe that you can demonstrate the requisite proficiency, the University may, at its discretion, consider your application.

Computer requirements

For this programme, you will need regular access to a computer with an internet connection. You will also need a media player (such as VLC) to play video files.

For more information about specific software requirements, please visit: london.ac.uk/psychology

How to apply

Please refer to the BSc Psychology web pages for details on how to apply: london.ac.uk/psychology

Fees

The total fee payable to the University of London for 2023–2024 will be published on our website once confirmed. On average, fees incur a five per cent year-on-year increase. For the latest information on programme fees, please visit: london.ac.uk/fees

Please note: Student fees shown on our website are net of any local VAT, Goods and Services Tax (GST) or any other sales tax payable by the student in their country of residence. Where the University is required to add VAT, GST or any other sales tax at the local statutory rate, this will be added to the fees shown during the payment process. For students resident in the UK, our fees are exempt from VAT.



The information contained in this prospectus was correct at the date of publication but may be subject to change. The University does not intend by publication or distribution of this prospectus to create any contractual or other legal relation with applicants, registered students, their advisers or any other persons. For the most up-to-date information, please visit our website.

Published by University of London.

Copyright © University of London,
February 2023.

For further information on the range of programmes we offer, please visit our website (london.ac.uk) or contact us at:

The Student Advice Centre

University of London
Senate House, Malet Street
London WC1E 7HU
United Kingdom

Telephone enquires: +44 (0)20 7862 8360

Online enquiries: sid.london.ac.uk



View the
Psychology
web page

This material is available in alternative formats upon request.
Please contact: special.arrangements@london.ac.uk

Follow us on:



london.ac.uk/facebook



london.ac.uk/flickr



london.ac.uk/instagram



london.ac.uk/issuu



london.ac.uk/linkedin



london.ac.uk/twitter



london.ac.uk/youtube

london.ac.uk/psychology