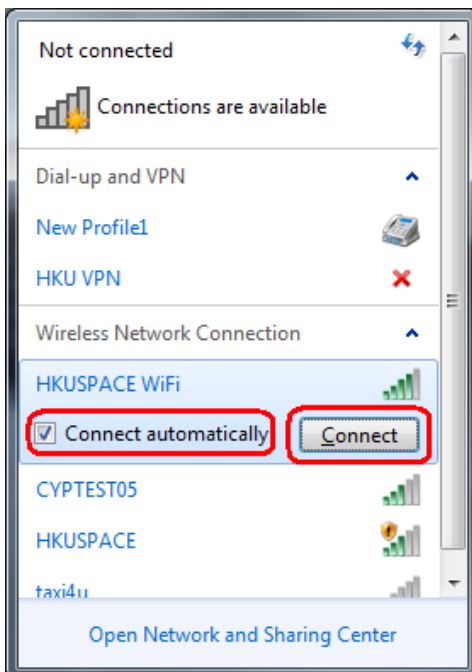


Procedure to configure Windows 7 to support HKUSPACE WiFi

- 1 Click **Wireless Network** icon in the system tray (located at bottom right corner). Select **HKUSPACE WiFi**.



- 2 Check **Connect automatically** and Click **Connect**.



3 In the Enter Credentials window, enter your username and password. Click **OK**.

a. For Student

Username: **Student_LoginID@hkuspace.hku.hk**

Password: **Learner Portal Password**

b. For Staff

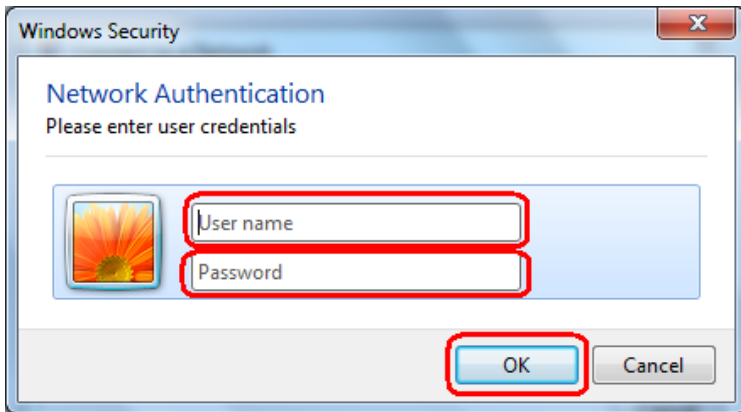
Username: **Staff_LoginID@hkuspace.hku.hk**

Password: **Staff Intranet Password**

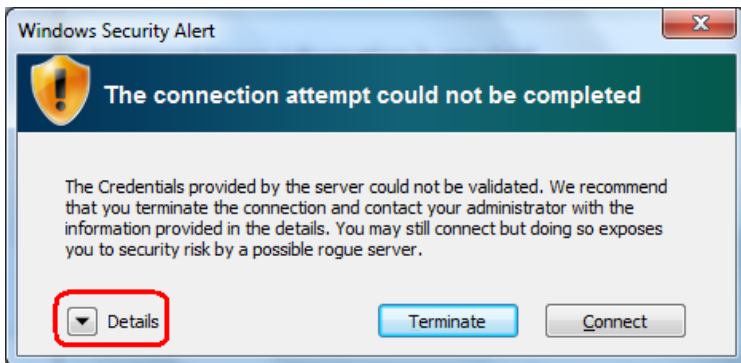
c. For Teacher

Username: **Teacher_LoginID@hkuspace.hku.hk**

Password: **Teacher Portal Password**



4 When Windows Security Alert pops up, Click **Details**.



5 Make sure Radius Server is **802.1x.hkuspace.hku.hk** and Root CA is **Go Daddy Secure Certificate Authority - G2**. Click **Connect**.