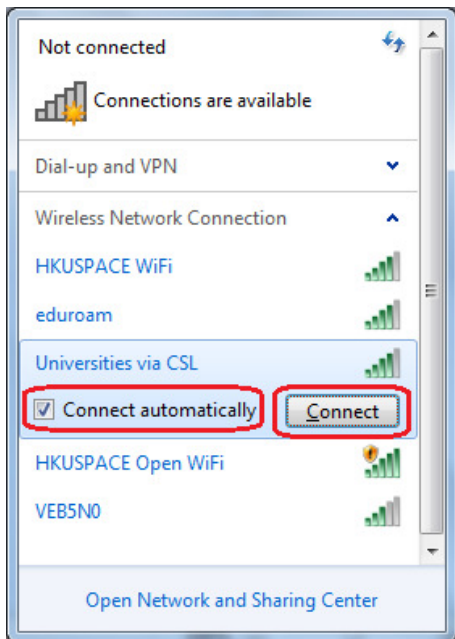


## Procedure to configure Windows 7 to support Universities via CSL

- 1 Click **Wireless Network** icon in the system tray (located at bottom right corner). Select **Universities via CSL**.



- 2 Check **Connect automatically** and Click **Connect**.



3 In the Enter Credentials window, enter your username and password. Click **OK**.

a. For Student

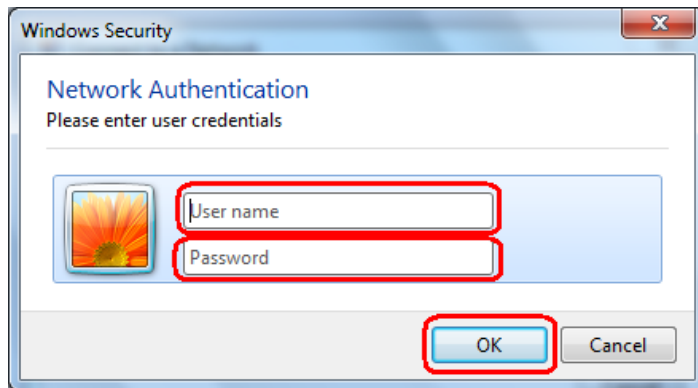
Username: **Student\_LoginID@hkuspace.hku.hk**

Password: **Learner Portal Password**

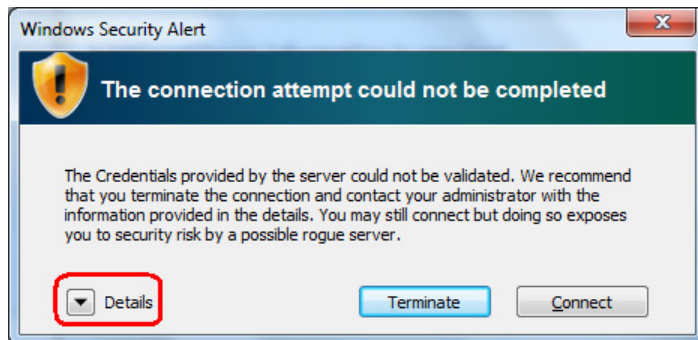
b. For Staff

Username: **Staff\_LoginID@hkuspace.hku.hk**

Password: **Staff Intranet Password**



4 When Windows Security Alert pops up, Click **Details**.



5 Make sure Radius Server is **802.1x.hkuspace.hku.hk** and Root CA is **GeoTrust Global CA**. Click **Connect**.

6 Open the Internet browser, go to <http://www.google.com>.