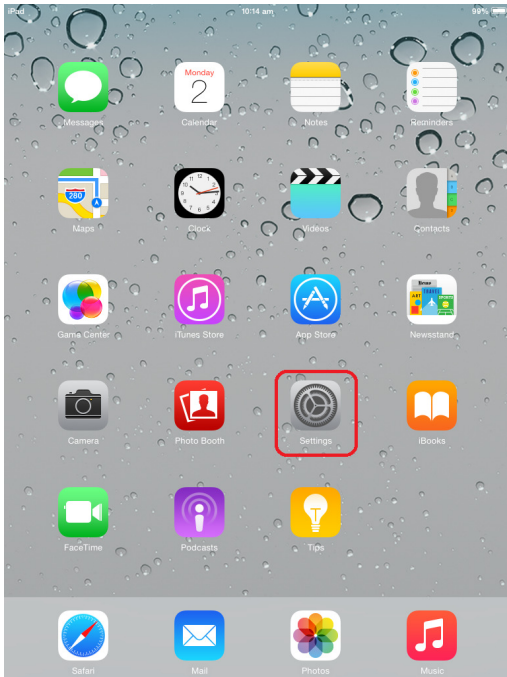
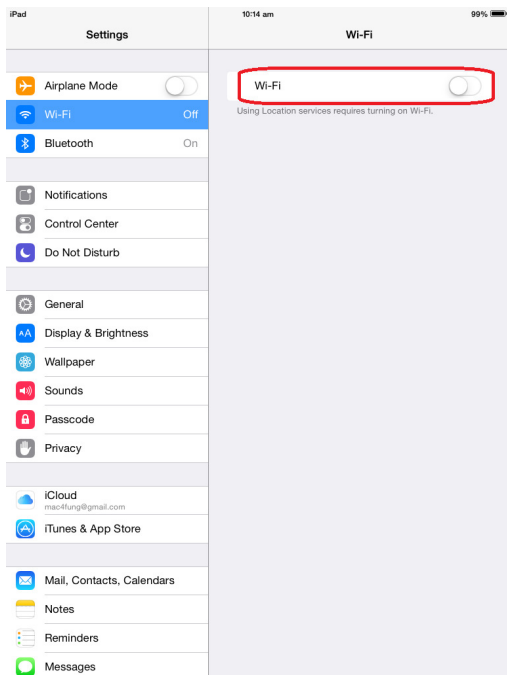


Procedure to configure Apple iPad to support eduroam

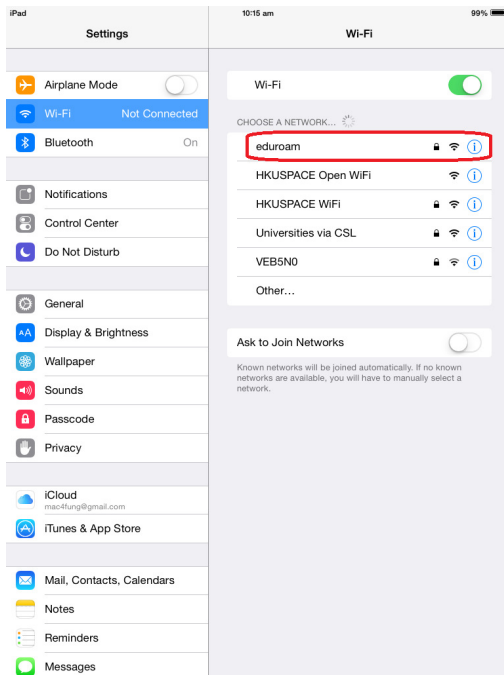
- 1 Turn on your iPad and navigate to the home screen. Locate and Tap the **Settings** icon.



- 2 Tap the **Wi-Fi** button.

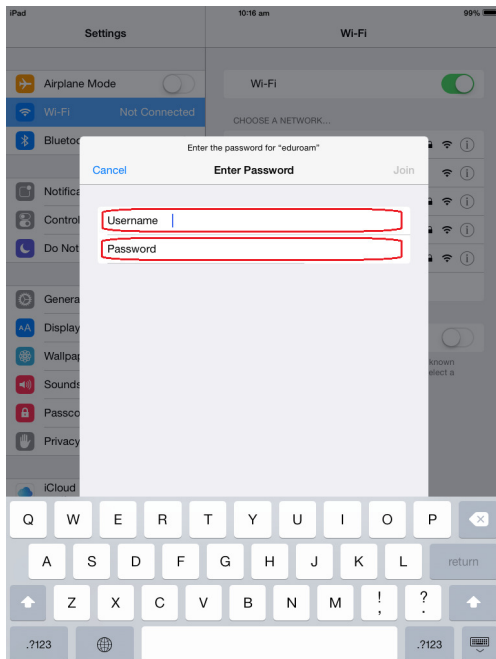


3 While you are on eduroam campus, ensure that WiFi is turned **ON** and tap "**eduroam**".



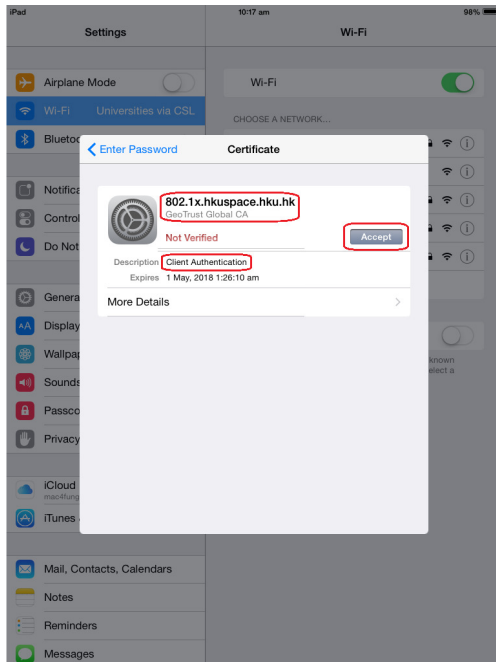
4 Enter your username and password.

- a. For Student,
Username: **Student_LoginID@hkuspace.hku.hk**
Password: **Learner Portal Password**
- b. For Staff
Username: **Staff_LoginID@hkuspace.hku.hk**
Password: **Staff Intranet Password**
- c. For Teacher
Username: **Teacher_LoginID@hkuspace.hku.hk**
Password: **Teacher Portal Password**



5 Tap **Join**

6 You will be asked to accept the certificate, **802.1x.hkuspace.hku.hk**, signed by **GeoTrust Global CA** the first time you connect. Click **Accept** to accept the **Client Authentication**.



7 You should now see "**eduroam**" as your selected network.

