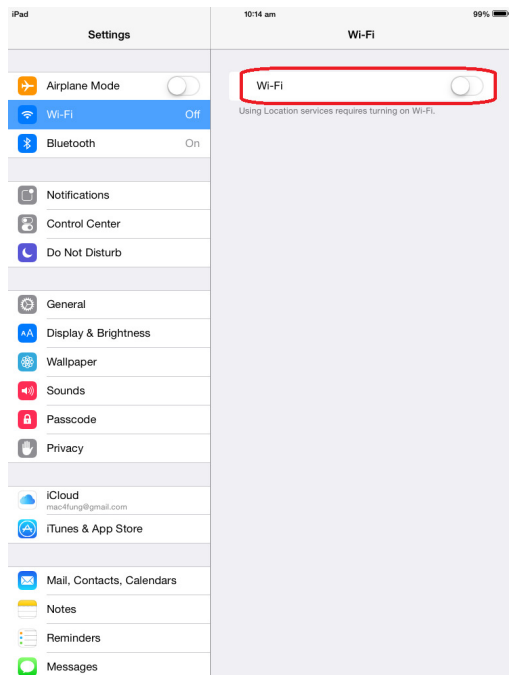


Procedure to configure Apple iPad to support HKUSPACE WiFi

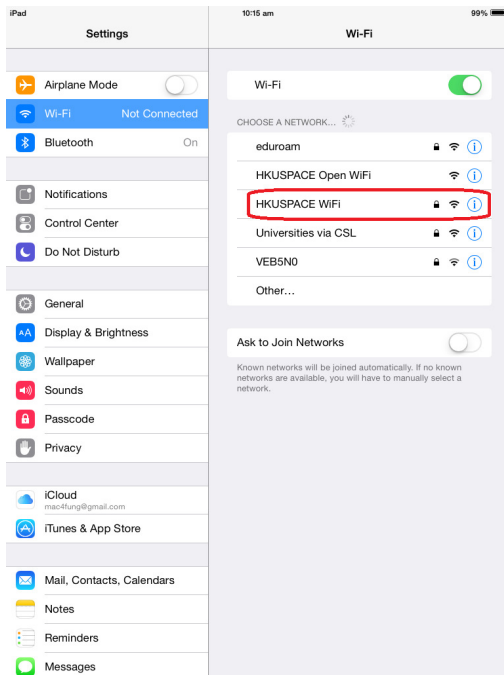
- 1 Turn on your iPad and navigate to the home screen. Locate and Tap the **Settings** icon.



- 2 Tap the **Wi-Fi** button.



- 3 While you are on HKU SPACE campus, ensure that WiFi is turned **ON** and tap "**HKUSPACE WiFi**".



- 4 Enter your username and password.

- a. For Student

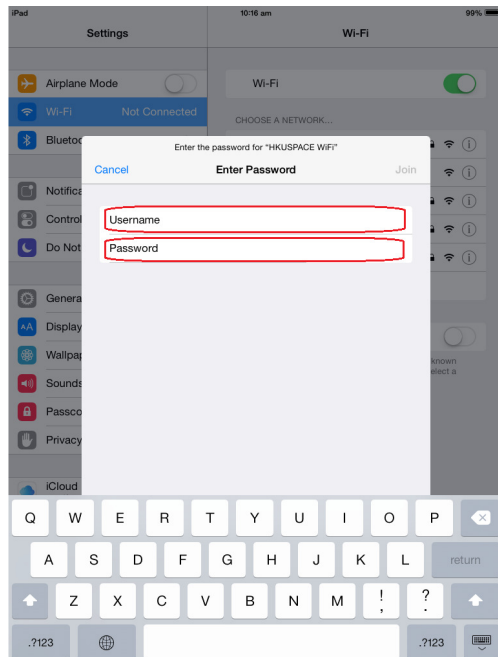
Username: **Student_LoginID@hkuspace.hku.hk**
Password: **Learner Portal Password**

- b. For Staff

Username: **Staff_LoginID@hkuspace.hku.hk**
Password: **Staff Intranet Password**

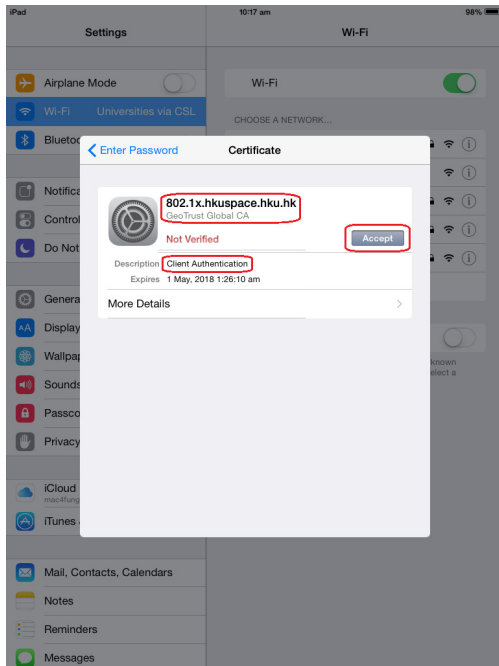
- c. For Teacher

Username: **Teacher_LoginID@hkuspace.hku.hk**
Password: **Teacher Portal Password**



5 Tap **Join**

6 You will be asked to accept the certificate, **802.1x.hkuspace.hku.hk**, signed by **GeoTrust Global CA** the first time you connect. Click **Accept** to accept the **Client Authentication**.



7 You should now see "**HKUSPACE WiFi**" as your selected network.

