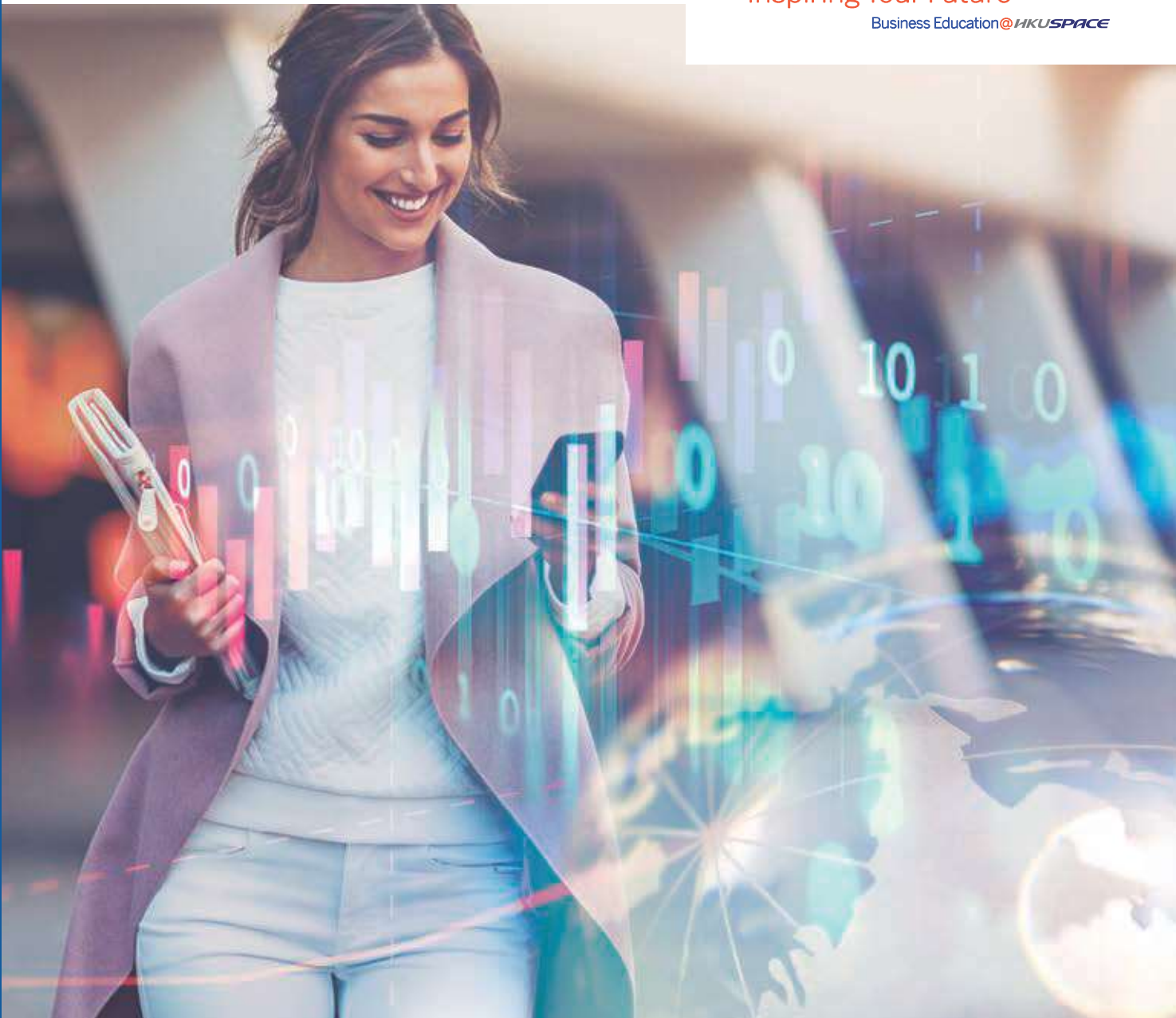


# Preparatory Course for MSc in Professional Accountancy

**AC083A - ACCT6080**  
**AC084A - ACCT6081**  
**AC085A - ACCT6082**  
**AC086A - ACCT6083**

Inspiring Your Future

Business Education@HKUSPACE



## INTRODUCTION

**Pathway 1 (including PGCert) will no longer be available to new students after the January 2021 intake.**

The University of London (UoL) and the Association of Chartered Certified Accountants (ACCA) have developed a ground-breaking programme of study that allows you to complete the MSc in Professional Accountancy and your ACCA professional qualification at the same time with mutual exemption.

If you are an active ACCA student, complete the Master's degree via **Pathway 1** and also become an ACCA affiliate.

If you are an active ACCA affiliate or member, complete two modules to earn a University of London Master's degree via **Pathway 2**.

On successful completion of your studies you will receive a University of London award.



## ABOUT THE PROGRAMME

### MSc Professional Accountancy

Getting both ACCA and Master qualifications will be of value to accountants aspiring to senior roles and enable them to stand out from the crowd in terms of their qualifications. Compared with the cost of studying for an accountancy qualification and a master's degree separately, this will save time and money for many ACCA students. The MSc modules are the first to be recognised by ACCA as counting towards the professional level of the ACCA qualification.

The MSc programme provides students with an opportunity to develop and apply master's level knowledge, understanding and skills within accountancy and finance related content.

### HKU SPACE Preparatory Course

Each preparatory course is of 60 hours with an aim to provide tuition support to students for studying the MSc in Professional Accountancy. Comprehensive online learning material is to be provided by UoL and HKU SPACE will provide the essential face-to-face tuition teaching support.

\* These are exempted courses under the Non-local Higher and Professional Education (Regulation) Ordinance. It is a matter of discretion for individual employers to recognize any qualification to which this course may lead.

# Mounting of each course is subject to sufficient enrolment and solely at the discretion of the School.

## ENTRY REQUIREMENTS

**Pathway 1 (the student pathway including the PG Certificate) will no longer be available to new students after the January 2021 intake.**

### MSc Pathway 1 – Existing ACCA students with the two Strategic Professional Essentials (SBL and SBR)

#### Entry Requirements:

- 1) Passed all the ACCA Applied Knowledge and Applied Skills papers or gained exemptions approved by ACCA
- 2) Passed the ACCA Strategic Professional Essentials (SBL and SBR)

#### Course Outline / Modules:

• Strategic Financial Management	2 Coursework	30%
	Examination (3 hours)	70%
• Strategic Performance Management	2 Coursework	30%
	Examination (3 hours)	70%
• Strategic Financial Project	Coursework	30%
	Project	70%

### MSc Pathway 2 – Existing ACCA members or affiliates

#### Entry Requirements:

- 1) Passed all the ACCA Applied Knowledge and Applied Skills papers
- 2) Passed the ACCA Strategic Professional Essentials (SBL and SBR)
- 3) Passed two (2) of the ACCA Strategic Professional Options from AFM, APM, ATX and AAA

#### Course Outline / Modules:

• Global Issues for the Finance Professional	2 Coursework	50%
	Project	50%
• Strategic Financial Project	Coursework	30%
	Project	70%

If students last ACCA pass was over five years ago:

1. Students need to demonstrate that their Continuing Professional Development (CPD) record meets ACCA policy, including an up-to-date CPD declaration.
2. They also need to complete a certified online preparation course. It takes about 3-5 hours a week over four weeks. There is a fee of US\$49 to take the test and receive the certificate.

### Postgraduate Certificate – Existing ACCA students without the two Strategic Professional Essentials (SBL and SBR)

#### Entry Requirements:

Passed all the ACCA Applied Knowledge and Applied Skills papers or gained exemption from these papers approved by ACCA (or their equivalent)

#### Course Outline / Modules:

• Strategic Financial Management	2 Coursework	30%
	Examination (3 hours)	70%
• Strategic Performance Management	2 Coursework	30%
	Examination (3 hours)	70%

Complete PGCert

Pass SBL and SBR

Pathway 1 - Strategic Financial Project

\* Students can transfer from Postgraduate Certificate to Pathway 1 when they have completed ACCA Strategic Professional Essentials (SBL and SBR) or their equivalent

Every effort has been made to ensure the contents of this brochure are correct at the time of printing. HKU SPACE reserves the right to update the contents of the brochure at any time without notice and this brochure does not form part of contract between the students and the School. Information in the HKU SPACE website is the most up-to-date version and supersedes the printed brochure, wherever applicable.

HKU SPACE is a non-profit making University company limited by guarantee.

## MODE OF DELIVERY

**Duration** : 60 hours spanning over 20 weeks (each preparatory course)  
**Day / Time** : Weekday evenings/ weekend afternoons  
**Venue** : Hong Kong Island

## COURSE FEE

**Pathway 1** (including **PGCert**) will no longer be available to new students after the January 2021 intake.

### Pathway 1 and PGCert

HKU SPACE	UoL	HKEAA
HKD 9900 per module	GBP 1585 per module <sup>#</sup>	HKD 865 per module

### Pathway 2

HKU SPACE	UoL
HKD 9900 per module	GBP 1585 per module <sup>#</sup>

<sup>#</sup> Applicable to the students opt for Institution-supported learning at UoL

- HKU SPACE Preparatory Course fee is HKD 9900 per module, UoL course fee is GBP 1585 per module, and HKEAA local examination fee is HKD 865 per module.
- If your most recent ACCA pass was over five years ago, you will need to complete an online preparation course (USD 49) on Coursera.
- All fees are subject to annual review and these institutions and examination bodies reserve the right to amend previously announced fees.

## APPLICATION

### Enrolment Method

To apply for this Preparatory Course, applicants must first register with University of London as students of the MSc in Professional Accountancy programme and enrol in the relevant module(s) before the designated deadline.

Please submit the application form with your payment in person to any of enrolment counters.



HKU SPACE  
Preparatory Course for MSc in  
Professional Accountancy



University of London  
MSc in Professional Accountancy



ACCA Accountancy Qualifications  
University of London MSc in  
Professional Accountancy

## ENQUIRIES

HKU SPACE - Preparatory Course for MSc in Professional Accountancy

✉ [mscpacc@hkuspace.hku.hk](mailto:mscpacc@hkuspace.hku.hk)

☎ +852 2867 8475 / +852 2867 8314

University of London - Professional Accountancy

🌐 [enquiries.londoninternational.ac.uk](http://enquiries.londoninternational.ac.uk)

☎ +44 (0)20 7862 8360