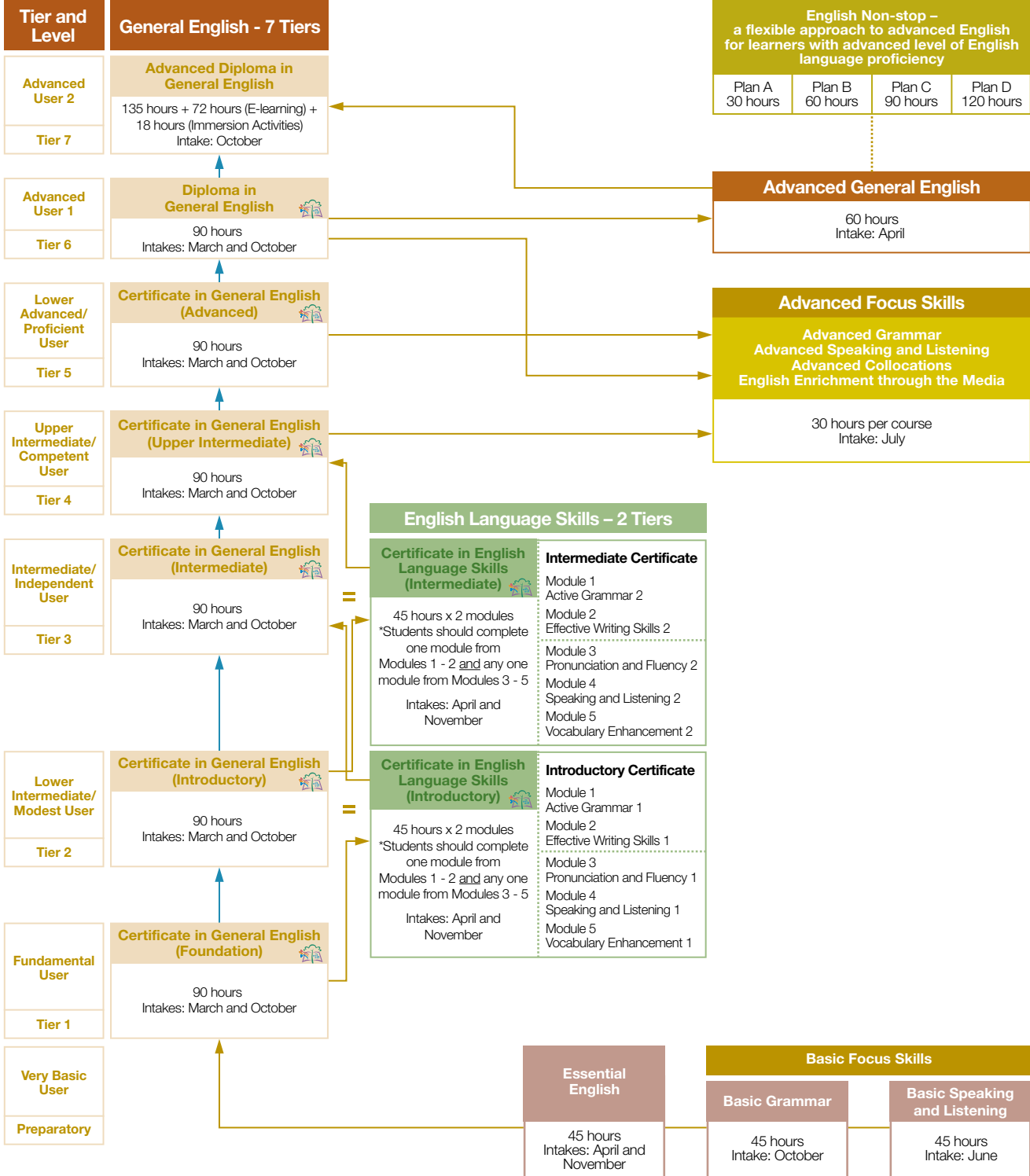


General English – a Seven-tier Programme

SPACE GENERAL ENGLISH

Award-bearing Programmes

Non-Awardbearing



English

英文

SPACE English Language

The SPACE General English programme consists of 7 tiers with each becoming progressively more difficult. Each tier leads to its own academic awards, spanning from Foundation Certificate to Advanced Diploma in General English awarded within the HKU System through HKU SPACE.

Upon completion of each tier, students may progress to the next level programme by meeting the minimum entry requirements for admission to the specific programme.

Our overall aim is to give students on-going practice of language skills at an appropriate level of proficiency. Under the guidance of very well-qualified and experienced teachers, students are equipped with English knowledge and skills through language practice and student-centred learning activities such as small group discussion, reading, writing, speaking and listening to a wide variety of authentic and semi-authentic language texts.



Continuing Education Fund

With the exception of Tier 7 Advanced Diploma in General English programme, ALL General English and English Language Skills programmes (NOT single modules) programmes and CEF claimable.

English Language Instructors / Teachers

Instructors of the programmes are drawn from our panel of qualified and experienced English language teachers. Almost all of them are native speakers of English; others are local teachers with native speaker competence.

E-learning

All registered SPACE English Language students enjoy the privilege of taking part in FREE online e-learning activities and self-access learning resources materials.

English Immersion Activities

Expenses incurred in English Immersion Activities are borne by individual Tier 7 Advanced Diploma in General English students.

Teaching Venue

There is no guarantee that the teaching venue allocated for the entire course duration will be the same. Depending on room availability, teaching venues may be different from those advertised at the time this Prospectus is published.

Fees

Subject to annual review.

Notes to Applicants for Admission to General English / English Language Skills Programmes

1. All applications will be processed on a first come, first served basis.
2. All application forms must be supported by copies of the relevant result letters showing your HKCEE/HKDSE/other publicly recognised English Language test results. Applicants who do not meet the entry requirements (See Entry Requirements on pg 142.) or are unable to produce any documentary proof need to take the SPACE General English Entrance Examination.
3. Once registered, NO refunds or transfers to a different class will be approved.
4. Unless any changes are made to the announced details, NO joining instructions will be issued.
5. If your application has been accepted, you should go to the first session of the course at the time and venue shown.

Notes to Non-Local Applicants / Non-Permanent Hong Kong Residents:

For Non-Local Applicants / Non-Permanent Hong Kong Residents:

The following non-local / non-permanent Hong Kong residents are eligible to study parttime English Language courses at HKU SPACE without making visa arrangements, ie they do not need prior approval before taking up part-time study courses:

1. those who live in Hong Kong on one-way permits (單程證);
2. those admitted to Hong Kong as dependents;
3. those issued with a valid working/employment visa; and
4. those who stay in Hong Kong under the Capital Investment Entrant Scheme.

It is the responsibility of individual applicants to ensure that their visas are valid and to make appropriate visa arrangements. Upon course enrolment, non-local applicants are required to show original copies of their permits and/or visas during application of General English programmes.

Enquiries

Tel: 3762 0930

Email: english-info@hkuspace.hku.hk

SPACE English – Entry Requirements

The following table summarises the entry requirements for admission to SPACE CEF-claimable General English / English Language Skills programmes. Holders of the following gain direct entry, that is, participation in the SPACE General English Entrance Examination is not required.

Awardbearing Programme	General English							English Language Skills	
	GE Tier 1	GE Tier 2	GE Tier 3	GE Tier 4	GE Tier 5	GE Tier 6	GE Tier 7	ELS Tier 1	ELS Tier 2
	Fundamental User	Lower Intermediate/ Modest User	Intermediate/ Independent User	Upper Intermediate/ Competent User	Lower Advanced/ Proficient User	Advanced User 1	Advanced User 2	Lower Intermediate/ Modest User	Intermediate/ Independent User
Recognised English Test Results OR HKU SPACE English Language Studies Awards	Certificate in General English (Foundation)	Certificate in General English (Introductory)	Certificate in General English (Intermediate)	Certificate in General English (Upper Intermediate)	Certificate in General English (Advanced)	Diploma in General English	Advanced Diploma in General English	Certificate in English Language Skills (Introductory) **	Certificate in English Language skills (Intermediate) **
HKU SPACE Awards /	Essential English Statement of Achievement	Foundation Certificate in General English (before Sept 2018) OR Certificate in General English (Foundation) (after Oct 2018)	Certificate in General English (Introductory) OR Certificate in English Language Skills (Introductory)	Certificate in General English (Intermediate) OR Certificate in English Language Skills (Intermediate)	Certificate in Business English OR Certificate in General English (Upper Intermediate)	Diploma or Certificate in Business English OR Certificate in General English (Advanced) with Merit or above	Diploma in General English with Grade C* or above OR Advanced Diploma in Business English OR Diploma in Business English with Merit	Foundation Certificate in General English (before Sept 2018) OR Certificate in General English (Foundation) (after Oct 2018)	Certificate in General English (Introductory) OR Certificate in English Language Skills (Introductory)
HKDSE / HKCEE (after 2007)	English Language Level 1	English Language Level 2	English Language Level 3	English Language Level 3 <u>and completed an intermediate level English course</u>	English Language Level 4	English Language Level 4 <u>and completed an advanced level English course</u>	English Language Level 5	English Language Level 2	English Language Level 3
HKCEE* (Prior to 2007)	English Language Grade E (Syl B) or Grade D (Syl A)	English Language Grade E (Syl B) (with no breakdown below E) or Grade C (Syl A)	English Language Grade D (Syl B) or Grade B (Syl A)	English Language Grade D (Syl B) or Grade B (Syl A) <u>and completed an intermediate level English course</u>	English Language Grade C (Syl B) or Grade A (Syl A)	English Language Grade C (Syl B) or Grade A (Syl A) <u>and completed an advanced level English course</u>	English Language Grade B (Syl B)	English Language Grade E (Syl B) or Grade C (Syl A)	English Language Grade D (Syl B) or Grade B (Syl A)
HKALE					AS Use of English Grade E	AS Use of English Grade E <u>and completed an advanced level English course.</u>	AS Use of English Grade D		

NOTE:

Applicants with equivalent qualifications will be considered on individual merit, and may be required to take a test in English.

* With effect from 2007, HKU SPACE recognises Grade E previously awarded for English Language (Syl B) and Grade C in the case of English Language (Syl A) at HKCEE as an acceptable alternative to Level 2 in this subject at HKCEE.

** Modules under the Certificate in English Language Skills (Introductory and Intermediate) programmes can be taken individually as standalone courses and are CEF claimable. Please refer to page (145-146) for details.