

Application

Application forms are available:

online <http://hkuspace.hku.hk/prog/dip-in-laboratory-science> by e-mail kwk.man@hkuspace.hku.hk

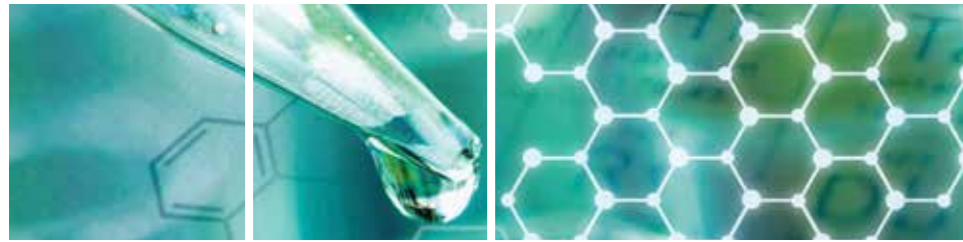
Applicant should submit:

- Duly completed application form;
- Photostat copies of the relevant certificates and transcripts; and
- An application fee (non-refundable) of HK\$150 by crossed cheque (payable to "HKU SPACE")

All documents should be sent to:

College of Life Sciences and Technology HKU SPACE
13/F Fortress Tower
250 King's Road
North Point Hong Kong
Attn: Ms Kiki Man

PLEASE MAKE SURE TO PAY SUFFICIENT POSTAGE FOR ALL MAIL ITEMS



Diploma in Laboratory Science 實驗室科學文憑 HS029A

Diploma in Laboratory Science
School of Professional and Continuing Education
The University of Hong Kong

Enquiries

Tel: 2975 5683

Email: kwk.man@hkuspace.hku.hk

Website: <http://hkuspace.hku.hk/prog/dip-in-laboratory-science>



THE UNIVERSITY OF HONG KONG
School of Professional and Continuing Education



資歷架構
Qualifications
Framework

QF Level: 3

QR Registration No.: 15/000095/L3

QR Registration Validity Period: 26 Jan 2015 – on-going

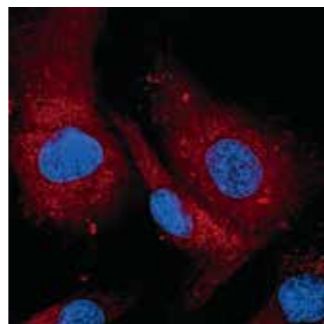


HKU SPACE has fully achieved the European Standards for Quality and is recognised as having world-class quality in professional and continuing education. Trust in us as your lifelong learning partner!



Programme Highlights

- a 2-year part-time training diploma programme specially designed for those wishing to take an initiative towards working in the laboratory and to acquire sound knowledge and primary skills on laboratory science.
- structured for students to develop and correlate basic academic knowledge in human anatomy & physiology, applied immunology, biochemistry & molecular genetics in medical laboratory tests.
- designed to develop students for technical competence and skills required to work in a testing laboratory under supervision.



Programme Structure

The programme consists of four modules, providing a total of 221 hours of directed teaching. Students are required to complete 4 taught modules within the period of two calendar years. The four modules cover the topics essential to the laboratory science services.

Module 1: Introduction of Laboratory Science and Basic Laboratory Skills

This module is designed to provide students with working principles of general laboratory equipment and the concepts of laboratory safety.

Module 2: Fundamentals of Human Anatomy & Physiology, Biochemistry & Molecular Genetics, and Applied Immunology

This module provides students with the basic principles of biochemistry, molecular genetics, human anatomy, physiology, and applied immunology.

Module 3: Integrated Laboratory Science Studies

This module provides students with basic knowledge of the major disciplines of testing laboratory science, viz. Clinical Biochemistry, Hematology & Serology, Medical Microbiology, Histopathology & Cytology, Microbiological Testing for Food & Herbal Products, and Toxicology for Food & Herbal Products

Module 4: Laboratory Management and Quality Assurance

This module is designed to enhance student's understanding and awareness of the occupational health and safety legislation and for them to develop management, effective communication and quality assurance skills for the testing laboratory service.

Delivery Mode

The programme is delivered in a part-time mode with face-to-face lectures and case-study tutorials. Emphasis will be on laboratory and technical aspects with demonstrations and hands-on laboratory practicals. Normally classes will be held on weekday evenings (Tuesday and/or Wednesday) from 6.30 pm to 9.30 pm.



Medium Of Instruction

English supplemented with Cantonese

Duration Of Study And Award

Students can complete the programme in two calendar years. For each academic year, there are two semesters. Each teaching semester should consist of 16 teaching weeks, followed by 2 reading weeks and 1 examination week. This Diploma in Laboratory Science will be awarded within the HKU system through HKU SPACE. To be eligible for the award, students have to complete and pass all modules and achieve a minimum attendance rate of 70%.

Assessment

Assessment of modules is normally based on a combination of coursework and examination. Coursework can include written assignments, laboratory practical reports and seminar presentations. The pass mark for all assessments is 50.

Articulation / Admission To Higher Level Programme

Graduates can apply for admission to the Higher Certificate in Medical Laboratory Science offered by HKU SPACE.

Course Commencement and Teaching Venue

Tentatively the programme will commence October 2022. The classes are held in HKU SPACE Learning Centre (usually Admiralty, Causeway Bay, Fortress Hill, Island South (Pokfulam)) / HKU Campus.

Admission Requirements

Applicants shall have attained

1. HKDSE Examination Level 2 or above in 5 subjects including English Language, Chinese Language and preferably Chemistry; or
2. HKCEE Grade E or above in 3 subjects (preferably one in Chemistry), and Level 2 in English Language and Chinese Language; or
3. HKALE Grade E in one AL subject (preferably Chemistry) or two AS subjects Equivalent qualifications will be considered by the School.

Applicants who do not have the above academic qualifications but aged 21 or above with relevant experience may also be considered. An interview may be necessary in such cases.

Note

(a) Applicants are allowed to use not more than two Applied Learning (ApL) subjects in the application.

(b) The recognition of the ApL subjects is as follows:

"Attained with distinction II" is deemed equivalent to Level 4;

"Attained with distinction" or "Attained with distinction I" is deemed equivalent to Level 3; and

"Attained" is deemed equivalent to Level 2.

(c) With effect from 2007, HKU SPACE recognizes Grade E previously awarded for Chinese Language and English Language (Syllabus B), Grade C in the case of English Language (Syllabus A) at HKCEE as an acceptable alternative to Level 2 in these two subjects at HKCEE.

Tuition Fees

Course fee (Year 1): HK\$28,000 (one single installment and subject to review)

Course fee (Year 2): HK\$27,000 (one single installment and subject to review)

