



UNIVERSITY
OF LONDON

2026

Undergraduate programmes in Law

With academic direction
from the Laws Consortium

london.ac.uk/lb

World class. Worldwide.

Join the World Class

An aerial photograph of London, England, showing the River Thames, the Tower Bridge, and the Shard skyscraper. The image is used as a background for the text boxes.

1 Quality of learning

The law programmes in this prospectus have been developed by academics at six of the University of London law schools, ensuring consistently high quality.

2 Study without relocating

Fit your studies around your work and personal commitments. Study wherever you live and at a time that suits you.

3 Learn at your convenience

Choose from different entry points depending on your qualifications.

4 Employability

Enhance your employability by developing skills such as problem solving, critical thinking and self-discipline, all of which are valued by top law firms and employers worldwide.

5 Join the World Class

After graduation, you become part of our global network of influential alumni, including distinguished barristers, solicitors, leaders in industry and Nobel prize winners.



Your prestigious University of London qualification



About your qualification

When you graduate with a degree, diploma or certificate from the University of London, you will receive two important documents – your Final Diploma (the parchment you receive on graduation) and a Diploma Supplement.

The Final Diploma

- Indicates that you were registered with the University of London and awarded a University of London degree, diploma or certificate.
- States that University of London law schools developed the syllabus and provided assessment.
- Features the University of London crest and the Vice-Chancellor's signature.

The Diploma Supplement

- Describes the nature, level and content of the programme you successfully completed.
- Includes the transcript of courses taken, marks achieved and overall classification.
- States the names and roles of the University of London law schools and the method of study.

Contents

Key dates

There are two intakes each study year.

Intake 1:

Apply by: 1 October 2026*

Register by: 1 November 2026

Intake 2:

Apply by: 1 April 2027*

Register by: 30 April 2027

Examinations:

May and October

Certificate of Higher Education in Common Law (CertHE Common Law):

CertHE Common Law students and those who wish to receive support for the LLB from a Recognised Teaching Centre should contact the teaching centre, which may require you to make an earlier application (see page 20).

*Dates apply to LLB and Graduate Diploma in Commercial Law only.

Introduction

| | |
|---|---|
| Join the World Class | 2 |
| Your prestigious University of London qualification | 4 |
| Welcome to our global Law qualifications | 6 |
| The Laws Consortium | 8 |
| Studying with Undergraduate Laws | 9 |

Programmes

| | |
|---|----|
| How you study | 12 |
| LLB routes | 15 |
| Graduate Diploma in Commercial Law | 16 |
| Certificate of Higher Education in Common Law | 17 |
| Entry into the Legal Profession | 18 |

Reference

| | |
|--------------------------------------|----|
| Entrance requirements | 19 |
| Application and registration process | 20 |
| Further information | 22 |

Welcome to our global Law qualifications



Why study with us?

In a world where degrees and degree providers are proliferating, the University of London LLB offers the security of an internationally recognised qualification.

The University of London was the first university to offer a degree in English law, in the 1890s. The strong reputation of our LLB has been maintained because our students are marked to the same high standards whether they are campus-based or studying by distance and flexible

learning. Upon graduation, you will join a distinguished group of lawyers, solicitors, barristers and judges from around the world who have obtained their law degree through the University of London.

Seeking to become a legal practitioner is not the only reason for studying for a legal qualification. You might already be working in a law-related field – in the police force or social work, for example – and want to enhance your legal knowledge and professional standing.

Your career path might lie in the commercial or financial professions, where legal qualifications are highly valued not only for a specific knowledge of law but also because of the transferable skills that come from the study of law, such as creating reasoned arguments and problem solving.

Whatever your reasons for study, applying yourself to studies in law will provide a stimulating and challenging path.

A University of London degree

Undergraduate degrees of the University of London are awarded with Honours. The award certificate will indicate the level of the academic performance (Honours) achieved by classifying the award. The classification of the degree will be based on the ratified marks from the completed assessments.

The standard classification system for bachelor's degrees with Honours is:

- First Class
- Upper Second Class
- Lower Second Class
- Third Class

Specific rules for the classification of awards are given in the Programme Regulations, under Schemes of Award.



Patricia McKellar

Dean

'A law degree from the University of London equips students with a rigorous legal foundation and the intellectual skills needed to think critically, argue persuasively and make a meaningful impact in a complex world. Our students gain not only an internationally respected legal education but also the insight, discipline and perspective required to succeed in a rapidly changing society.'

The Laws Consortium

The law schools or departments of the following federation members of the University of London provide the academic direction for the University of London Undergraduate Laws qualifications. Collectively, they are known as the Laws Consortium.



Birkbeck

Founded in 1823, Birkbeck is unique in its special mission to enable mature students to gain higher education qualifications via part-time study. bbk.ac.uk



King's College London

Established in 1829, King's College London has been responsible for some of the discoveries that have shaped the modern world. kcl.ac.uk



LSE

Since 1895, LSE (The London School of Economics and Political Science) has been regarded as an international centre of academic excellence and innovation in the social sciences. lse.ac.uk



Queen Mary University of London

Queen Mary is one of the largest federation members of the University. Now heralded for its quality research efforts, it began life in 1887 as the People's Palace, a philanthropic endeavour to provide East Londoners with education. qmul.ac.uk



SOAS

SOAS is the world's largest centre for the study of Asia, Africa and the Middle East. Founded in 1916, it has built a reputation for its regional expertise and the calibre of its cross-disciplinary social sciences, arts and humanities programmes. soas.ac.uk



UCL

Founded in 1826, UCL was the first university in England to admit students of any race, class or religion, and the first to welcome women on equal terms with men. ucl.ac.uk

Studying with Undergraduate Laws



An internationally recognised qualification

If you want to achieve an internationally recognised qualification in law, where you can study at a pace that suits you, then you need look no further than the University of London.

Undergraduate Laws is committed to:

- **offering expert guidance** – our study materials are informed by current research and scholarship and engage with contemporary legal issues
- **providing a wealth of resources** – with our Online Library and Laws Virtual Learning Environment

(VLE), you will have a resource-rich learning environment to develop your legal research skills

- **promoting independent learning** – through the guidance provided in your study materials, we will support you in developing your capacity to manage your own learning.

By studying with us you will:

- acquire knowledge and understanding of the foundation subjects of common law
- learn to analyse and critically evaluate legal and relevant non-legal primary and secondary materials

- learn how to stand back and consider the 'bigger picture', and develop an awareness of the context of law
- develop transferable skills of research, problem solving and communication.

For further information about what to expect when undertaking a law module, please visit our website: london.ac.uk/llb

Two LLB routes

For those studying at undergraduate level for the first time:

Standard Entry LLB

Complete 12 modules in a minimum of three years and a maximum of six years.

For those who already have a three-year undergraduate degree:

Graduate Entry LLB

Complete nine modules in a minimum of two* years and a maximum of six years.

*Graduate Entry LLB students will only be permitted to register for the LLB for a minimum period of two years provided that they have passed the three Level 4 modules and Tort law [LA2001] in their first study year at the first attempt.

Flexible study

The study year for the LLB, Graduate Diploma in Commercial Law and Certificate of Higher Education in Common Law (CertHE Common Law) begins on 1 November or 30 April each year depending on when you apply.

There are two opportunities to **apply** each year (CertHE Common Law students should check with their teaching centre). The deadlines are:

- **1 October and 1 April**

There are two opportunities to **register** each year (CertHE Common Law students should check with their teaching centre). The deadlines are:

- **1 November and 30 April**

There are two **examination** opportunities each year:

- **May and October**

Students have flexibility to split their examinations over two sessions each year.



Overview of the awards

| Award | No. of modules | Study period |
|---|----------------|--------------|
| Certificate of Higher Education in Common Law | 4 | 1–3 years |
| Graduate Diploma in Commercial Law | 4 | 1–3 years |
| Standard Entry LLB | 12 | 3–6 years |
| Graduate Entry LLB | 9 | 2*–6 years |

*Graduate Entry LLB students will only be permitted to register for the LLB for a minimum period of two years provided that they have passed the three Level 4 modules and Tort law [LA2001] in their first study year at the first attempt.

Progressing through your LLB studies

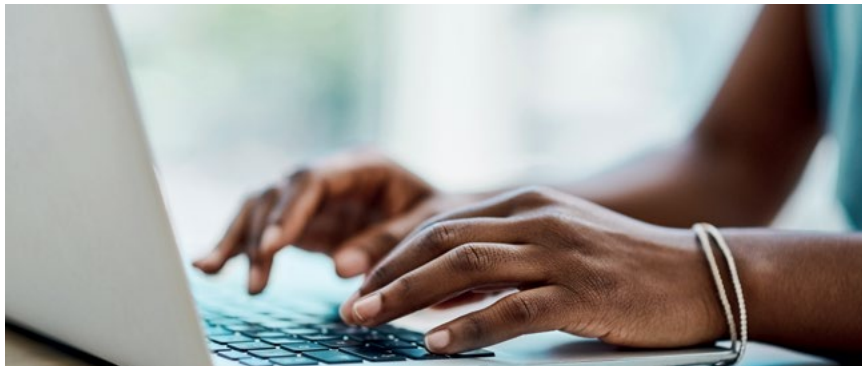
Your progression route is determined by the Programme Regulations and the profession that you wish to enter into after completing your degree (see page 18).

Assessment

All modules, except the Dissertation, include a written assessment in May/October. The examination format varies by module.

All examinations are marked by University of London approved academics.

The format and mode of assessment for this programme may change due to events or circumstances beyond our control. The University will inform students of the assessment arrangements. For the latest information on examinations, please visit: london.ac.uk/exams



Recognition of the degree

University of London degrees are acknowledged worldwide for their quality and academic rigour.

If you hope to enter a legal profession, you should check the local requirements for legal practice. It is your responsibility to find out the extent to which they recognise the University of London LLB.

Visit our website

Undergraduate Laws provides a range of information, including descriptions of the modules, which you are welcome to consult. Please visit: london.ac.uk/llb

You may also find the University of London's Introduction to English Common Law short open course useful: bit.ly/moocs-common-law



Zainab Muhammad

LLB student, Pakistan

'I decided to study with the University of London at TMUC Karachi as I was recommended to by a friend. Online and in-person study works quite well for me as my university and faculty accommodate with the timings and it helps the students study during the day and at night. There are a lot of benefits to studying with a teaching centre. For example, if one needs assistance immediately, they can go to the faculty or one of the members for immediate assistance.'

How you study

Your Student Portal

You are required to have access to the internet so that you can use resources that are available online. Your Student Portal is a secure website where you can access your personal details, pay your fees and receive news from the University of London. You are expected to log in on a regular basis to manage your student account and access your resources.

Your study materials

Your study materials are designed to support your learning and are central to your studies. The online module resources take you systematically through the module topics, complete with learning activities (plus generic feedback) and guidance on assessment. As the University of London does not provide a complete lecture series or individual tutor interaction, you have the option to attend a local Recognised Teaching Centre for additional support.

Laws VLE

The VLE is integral to your study experience. There you can find the following resources.

- **Online module content**
To provide you with flexibility in how and where you study.
- **Past examination papers and Chief Examiners' reports**
To help you develop your examination technique and your understanding of the format of your examinations.
- **Pre-exam updates**
Highlighting any significant changes to the law, key cases or legislation since the publication of the module guide. These are published annually in February.
- **Module reading**
Essential readings in the modules are provided via the VLE.
- **Statute books**
Download your personal copy of the relevant statute e-books to use throughout your studies.
- **Module blog posts**
Providing information on current legal issues: lawsblog.london.ac.uk
- **Student discussion forums**
An opportunity to debate and interact with other students.
- **Latest announcements**
Providing up-to-date information about your programme.



Online Library

All registered students have access to the Online Library from the Student Portal, or it can be accessed directly at: onlinelibrary.london.ac.uk

Among the many excellent resources, it provides free access to:

- the professional legal databases
 - Lexis+, Westlaw, vLex Justis
- cases and up-to-date statutes
- key academic law journals
- multidisciplinary databases in business and the social sciences
- a range of e-books to support your studies.

Stay connected

The Laws newsletter is a great way to keep in touch with what is happening within Undergraduate Laws. Updates on key events and developments are regularly emailed to students.

You can also connect with your fellow students and Undergraduate Laws through **Facebook: [facebook.com/ulplondon](https://www.facebook.com/ulplondon)** and **Instagram: [@uglaws_unioflondon](https://www.instagram.com/uglaws_unioflondon)**

Online study events

Undergraduate Laws organises an annual online Revision Event for an additional fee. This event covers a

number of modules and is taught by University of London approved tutors and offers support to students preparing for examinations. The event is also an excellent opportunity for students to meet other students online, to concentrate on important areas of study and to discuss legal developments.

More information can be found on our website: london.ac.uk/llb

Recognised Teaching Centres

In order to benefit from face-to-face interaction with academics and other students, many students choose to pay for teaching support at a local independent institution. So that you can rely on the standards of the teaching, support and administration that you will receive, we have created a network of institutions that offer study support to University of London students within our Teaching Centre Recognition Framework. These institutions are known as Recognised Teaching Centres.

We cannot advise you on which teaching centre is best for you; ultimately, you must choose one that meets your own needs.

For details about Recognised Teaching Centres please visit: bit.ly/recognised-centres

Further information

For further information on resources and study materials please see: bit.ly/llb-how-to-study or contact:





‘I would definitely recommend this degree. It taught me critical thinking and problem solving, and helped me to build a better career path. The programme has enabled me to discover a stronger sense of self and enhance my life. Not only was the course itself transformative, but the people I met and the supportive community around it also made a big difference.’

Lizabeth Chang
LLB alumna, Hong Kong

LLB routes



Standard Entry LLB

- As a Standard Entry student, you must register for *Legal system and method* in your first study year. You are required to study 12 modules to complete the LLB.
- You must be registered for a minimum of one module and may register for a maximum of four modules in your first study year. The maximum number of modules you may be registered for in any subsequent year is four, and, exceptionally, five in your final study year.

Graduate Entry LLB

- If you have already completed a undergraduate degree, you may be eligible for the Graduate Entry LLB. This means that you will only have to study nine modules rather than 12 to complete the LLB. Eligibility for Graduate Entry is at the discretion of the University.
- You must be registered for a minimum of one module and may register for a maximum of four modules in your first study year. The maximum number of modules you may be registered for in any subsequent year is four, and, exceptionally, five in your final study year.

Further information

There are both compulsory and optional modules that will make up your LLB degree and cover a wide range of topics, from *Contract law* to *Jurisprudence and legal theory*.

To find out more about the LLB structure, please visit: bit.ly/llb-programme-structure

Graduate Diploma in Commercial Law

Programme overview

The Graduate Diploma in Commercial Law is a flexible programme aimed at those who wish to gain some knowledge and expertise in English commercial law to enhance their existing qualifications. It is a qualification in its own right, designed to offer specialisation in aspects relevant to commercial law and practice for students who do not wish to register for the full degree, or require a bridging qualification for entry into postgraduate study.

This qualification is for you if:

- you have the ability, motivation and self-discipline to study at degree level but do not want to commit to a full LLB
- you would like to enhance key skills of communication, information literacy, analysis and argument
- you want the flexibility to pace your studies to fit in with your other commitments
- you want to develop specialist subject knowledge in the area of commercial law.

Please note: the programme is not a Graduate Diploma in Law and does not offer a Graduate Entry pathway onto the LLB. If you are a graduate seeking an LLB degree, see page 15.



Features of the Graduate Diploma

- Flexibility in the time you can take to complete it, in the available examination opportunities and in the choice of modules.
- The modules you take are rigorously examined to the same standards applied to both internal and external students studying for the LLB.
- Specially developed course materials and online resources, including an online library and online learning environment, giving you the ability to study independently.
- You may choose to register with a Recognised Teaching Centre to benefit from supplementary support.

Flexible study options

You have the flexibility to pace your studies to fit in with your other commitments as you have up to three years to complete this diploma. You are also able to split examinations over two examination sessions each year.

Further information

To find out more about the Graduate Diploma in Commercial Law structure, please visit: bit.ly/graddip-commercial-law

Certificate of Higher Education in Common Law

Programme overview

The CertHE Common Law is a qualification in its own right that also provides an entry route to degree study. The modules studied in the CertHE Common Law are the same as the Level 4 modules of the Standard Entry LLB and may be studied either full time or part time. Students must attend a course of instruction at a teaching centre that is recognised to offer support for the CertHE Common Law (see page 13).

This qualification is for you if:

- you have the ability, motivation and self-discipline to study at degree level but do not have the qualifications usually required to enter a degree programme
- you have a personal or professional interest in studying law and would like an easily managed programme of study
- you intend to undertake a degree programme but would like to gain a recognised qualification after one year.

Features of the CertHE Common Law

- You can achieve a law qualification in some of the core legal subjects without committing to the full LLB.
- You can complete the programme in a minimum of one year and a maximum of three years.
- You can transfer to the Standard Entry LLB after successful completion of three modules.
- You must register with a teaching centre that is recognised for the CertHE Common Law so that you can benefit from the tuition support.

Teaching centre support

In order to be recognised by the University of London, teaching centres must have satisfied certain quality criteria. However, they remain independent of the University of London and responsible for the quality of academic support they provide.

How to apply for the CertHE Common Law

Full details of the CertHE Common Law, including entrance criteria, syllabuses and application process should be obtained from the teaching centre at which you intend to enrol.

Further information

To find out more about the CertHE Common Law structure, please visit: bit.ly/certhe-common-law



Entry into the legal profession



Practising law in England and Wales

The following websites should be consulted for up-to-date information:

- Solicitors Regulation Authority sra.org.uk/students
- The Law Society lawsociety.org.uk/careers/becoming-a-solicitor
- Bar Standards Board barstandardsboard.org.uk/training-qualification.html

Aspiring Barristers

Aspiring barristers will need a degree with a minimum 2:2 (Lower Second Class) classification.

To complete the academic component of legal training by way of a law degree they will also need to follow the rules set by the Bar Standards Board. The key points of the current rules are that students must:

- complete the degree within the maximum time limit of six years

- pass the examinations in the seven foundations of legal knowledge in no more than three attempts. The seven foundations of legal knowledge are covered in the following University of London modules:
 - [LA1010] Criminal law
 - [LA3002] Equity and Trusts
 - [LA2024] EU law
 - [LA1040] Contract law
 - [LA2001] Tort law
 - [LA2003] Property law
 - [LA1020] Public law

Practising law outside England and Wales

If you hope to practise law outside England and Wales, you should consult the relevant regulatory body to establish if they recognise the University of London LLB by distance and flexible learning as fulfilling (in whole or in part) the academic stage requirements of legal training.

We recommend that you seek this confirmation in writing. Regulation of the legal professions changes from time to time in all jurisdictions and you should continue to check for regulatory changes that could affect you.

Entrance requirements

LLB (Standard Entry and Graduate Entry routes)

To be eligible to register for the LLB you must:

- normally[†] be aged 17 or above on or before the date of programme registration **and**
- meet our entrance requirements and our English language requirements.

There are different entrance requirements depending on whether you study at a Recognised Teaching Centre or as an independent student. More information on the entry requirements for the LLB can be found in on our website, visit: london.ac.uk/llb

[†]Applications will be considered from applicants who do not meet the normal minimum age requirement for admission. Each application will be considered on an individual basis, and the decision taken at the discretion of the University of London.

Graduate Diploma in Commercial Law

To be eligible to register you must:

- hold an undergraduate degree from an awarding institution acceptable to the University of London **and**
- meet our English language requirements. We may require a test of proficiency in English.

For more information on entry requirements for the Graduate Diploma in Commercial Law visit: bit.ly/graddip-commercial-law

CertHE Common Law

To be eligible to register you must:

- be aged 18 or above on or before the date of programme registration **and**
- be admitted to a course of instruction at a teaching centre that has been recognised for this purpose by the University of London.

For more information on entry requirements visit: bit.ly/certhe-common-law

Useful links

For full details on how to meet our entrance requirements, including further information on our General Entrance Requirements and English language requirements, visit: london.ac.uk/applications



William Tong Wan Long
LLB student, Malaysia

'I have the ability to access my material anywhere, no matter if it's on my phone, on my computer, or on my iPad as well. And then, this can mix with the face-to-face interaction with my lecturers. So, these two blend perfectly for my study journey.'

Application and registration process



Getting started

For the bachelor's degree, you must apply online at: london.ac.uk/llb

For the Graduate Diploma in Commercial Law and the CertHE Common Law, please see the relevant programme pages on our website.

If you intend to study at a Recognised Teaching Centre, then you are advised to contact them before submitting your application.

Please read the 'Guidance notes for applications' before you complete your application.

Stage 1

Submit your online application form and application fee by 1 October or 1 April.

Please note: the application fee is non-refundable.

Stage 2

Submit your documentary evidence. This can be done online when submitting your application or at a later stage. Please visit: bit.ly/Doc-evidence

Please do not send original documents.

Stage 3

We will contact you by **email** with one of the following:

Offer Letter: if you meet our entrance requirements and we have seen all required documentation, then we will send you an Offer Letter.

Request for further information: we might require further documentation/information before we can confirm that you meet our entrance requirements.

We have referred your application to the Admissions Panel: if you do not automatically meet our entrance requirements, then we will refer your application to the Admissions Panel for individual consideration. The Admissions Panel will consider qualifications that are not published under the Qualifications for Entrance Schedule, incomplete qualifications and substantial relevant work experience. If we cannot accept you with your current qualifications and experience, then we will advise you on what qualifications you could take in order to meet our entrance requirements in the future.

Stage 4

Complete the online registration by 1 November or 30 April. We explain how to do this in the Offer Letter.

Stage 5

Start your studies. Once you register, you will be given access to the VLE. We will also send any additional study materials to your correspondence address.

Applicants living in Hong Kong can apply through:

The University of Hong Kong School of Professional and Continuing Education (HKU SPACE)
University of London (Admissions Office) 3/F, Admiralty Centre
18 Harcourt Road, Hong Kong

Useful information for applicants

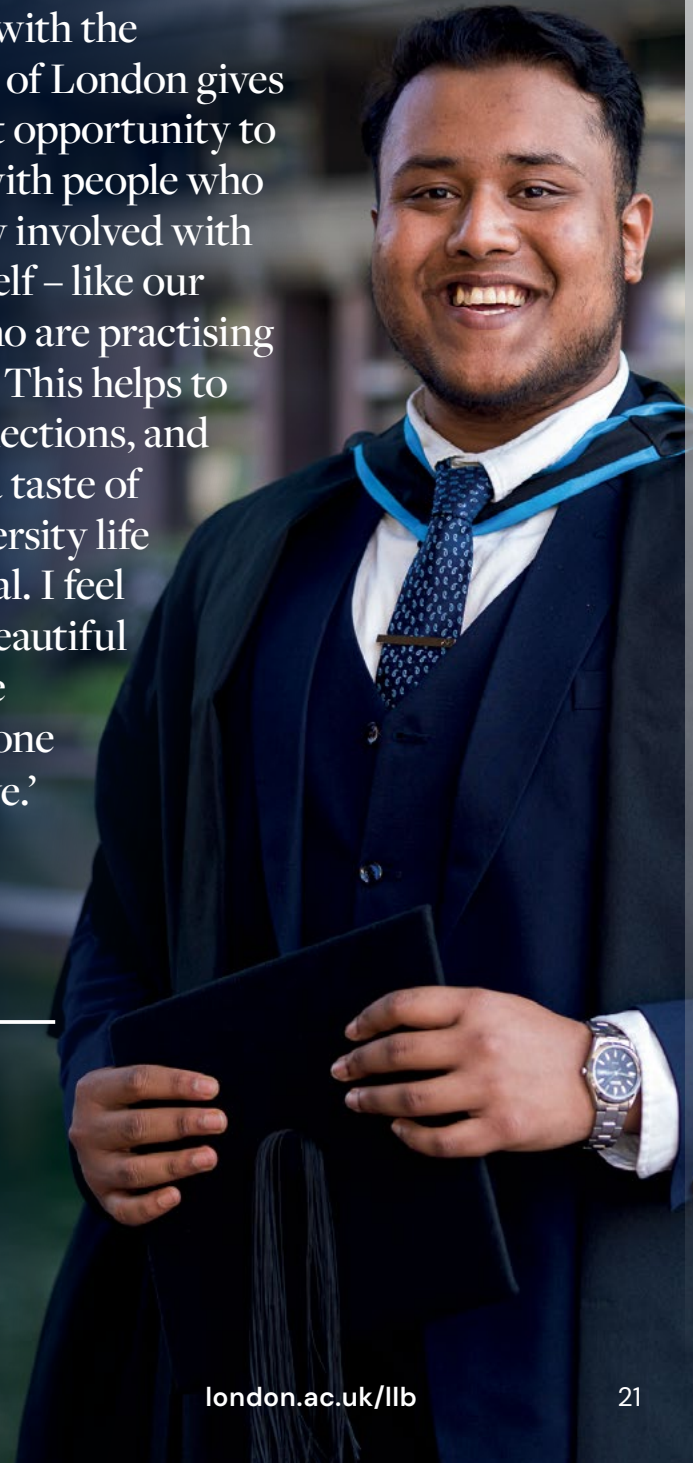
Submit your application even if you are waiting to sit an examination or to receive examination results. We can begin to process your application without all the evidence, although we will not be able to give you a final decision until all the necessary documentation has been received.

If you are unsure of whether or not you meet our entrance requirements, then we might be able to advise you on this before you submit your online application. However, due to our increased workload, we are unable to provide this advice between 1 August and 30 October of each year.

Offers are valid for two years.

‘Studying with the University of London gives you a great opportunity to network with people who are already involved with the law itself – like our faculty, who are practising barristers. This helps to build connections, and gives you a taste of what university life is in general. I feel like it’s a beautiful experience that everyone should have.’

Samuel Aziz
LLB alumnus,
Bangladesh



Further information

Fees

The total fee payable to the University of London will be published on our website once confirmed for the academic year. On average, fees incur a five per cent year-on-year increase. For the latest information on programme fees, please visit: london.ac.uk/fees

Please note: student fees shown on our website are net of any local VAT, Goods and Services Tax (GST) or any other sales tax payable by the student in their country of residence. Where the University is required to add VAT, GST or any other sales tax at the local statutory rate, this will be added to the fees shown during the payment process. For students resident in the UK, our fees are exempt from VAT.

Other costs

In addition to the fees payable to the University, you should also budget for the cost of:

- purchasing textbooks
- any tuition you choose to take
- tuition you are required to take for the CertHE Common Law
- any fee levied by your local examination centre.

Financial assistance

Undergraduate UK students may be able to apply for a part-time tuition fee loan to cover the cost of registration and examination entry fees.

For full details on eligibility criteria please visit: gov.uk/student-finance Alternatively, some employers in both the public and private sectors may be willing to consider offering financial assistance to their employees.

Students with disabilities and/or access requirements

The University of London welcomes applications from disabled students and/or those who have access requirements.

If you are disabled and/or have access requirements, we will make every reasonable effort to meet your needs. This may include making access arrangements for examinations such as a separate room or special aids. If you would like to tell us about your disability and/or request access arrangements, please complete the relevant section of the application form, or contact the Inclusive Practice Manager at: special.arrangements@london.ac.uk

Armed Forces

Students who are members or ex-members of the UK Armed Forces should note that the University of London has been approved by the Ministry of Defence in support of the Enhanced Learning Credits (ELC) Scheme (ELC Provider Reference Number 1284). The Scheme provides financial support to eligible Service Personnel who wish to enhance their educational or vocational achievements. The ELC Administration Service website can be found at:

www.enhancedlearningcredits.com



The information contained in this prospectus was correct at the date of publication but may be subject to change. The University does not intend by publication or distribution of this prospectus to create any contractual or other legal relation with applicants, registered students, their advisers or any other persons. For the most up-to-date information, please visit our website.

Published by University of London.

Copyright © University of London, May 2026.

For further information on the range of programmes we offer, please visit our website (london.ac.uk) or contact us at:

University of London
Senate House, Malet Street
London WC1E 7HU
United Kingdom

Telephone enquiries: +44 (0)20 7862 8360

Online enquiries: london.ac.uk/enquiries

This material is available in alternative formats upon request.
Please contact: special.arrangements@london.ac.uk

Follow us on:



london.ac.uk/facebook



london.ac.uk/flickr



london.ac.uk/instagram



london.ac.uk/linkedin



london.ac.uk/x



london.ac.uk/youtube

london.ac.uk/llb

